

OUR MISSION:

Engineering and Construction Management services for the development and construction of a new sanitary pump station and force main to transfer wastewater from the Ronkonkoma Hub development to the Bergen Point Sewage Treatment Plant.

Due to the flourishing commercial and residential population in the Ronkonkoma Hub section of Long Island, a new sanitary flow method was **urgent** and **critical**. The transfer of wastewater had to be diverted from a new pump station to a gravity interceptor that would travel to a point seven miles away via force main piping and gravity sewer and connect to the Southwest Sewer District No.3 collection system in Central Islip. This would result in the wastewater flowing to the Bergen Point Sewage Treatment Plant located in Babylon, NY, for proper treatment and disposal.

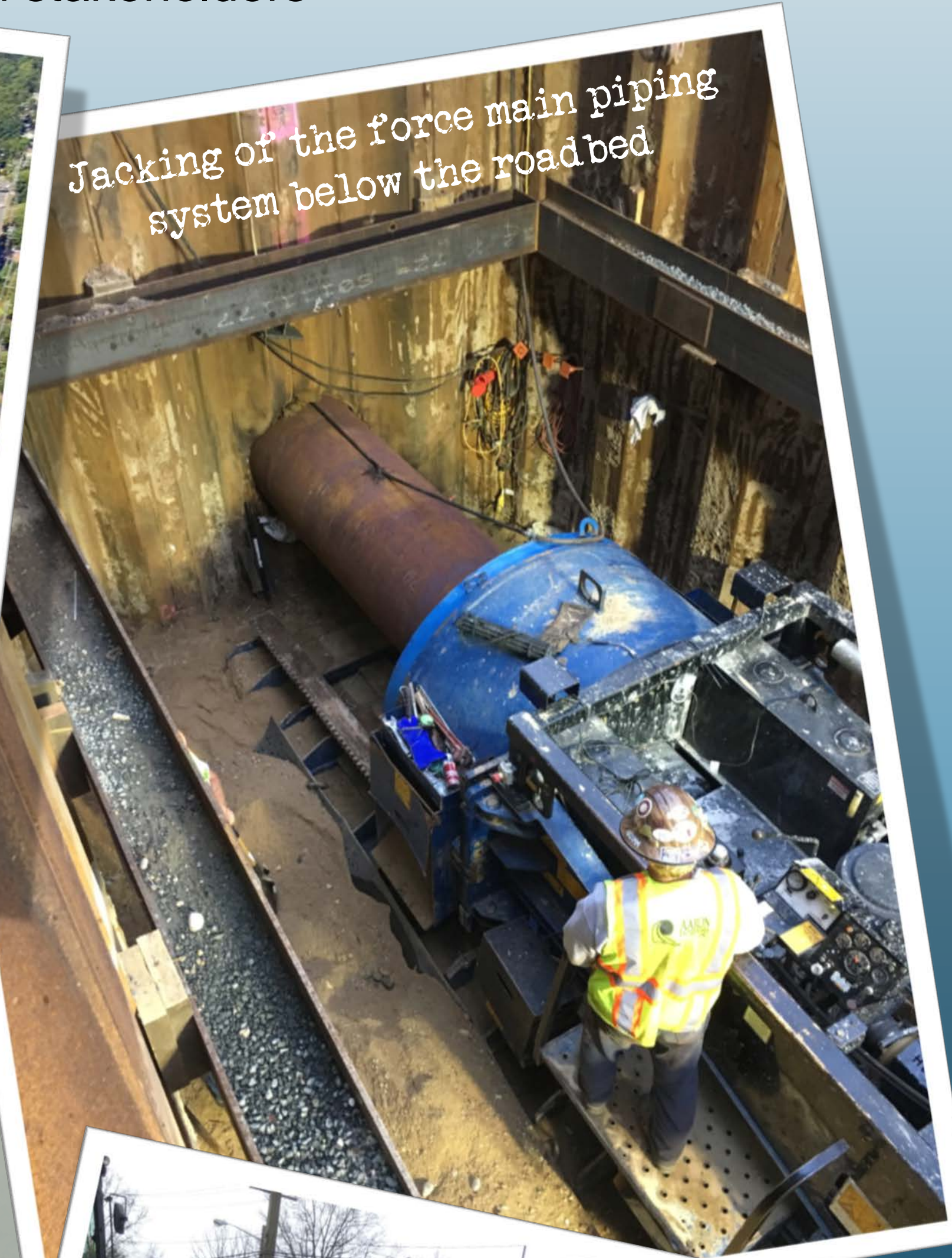
**MISSION:
IMPOSSIBLE**

CHALLENGES

- Environmental considerations for Connetquot River State Park Preserve
- Sewage flows up to 500,000 gallons per day
- Seven miles to the nearest gravity sewer connection point
- Routing considerations
- Logistical coordination with fifteen jurisdictions and stakeholders



Ronkonkoma Hub



Jacking of the force main piping system below the roadbed



Ronkonkoma Train Station



Environmental Considerations at Connetquot River State Park Preserve - protect the force mains and prevent a discharge of sewage at this environmentally critical location.



Directional Pipe Routing, avoiding disturbance to community, traffic and presence of existing utilities.



The new sanitary pumping station is capable of pumping 2.1 MGD (million gallons per day).

The Project provides the necessary sewage management services and treatment to allow for a progressive, mixed-use development around the key transportation hub. The State-of-the-Art TOD can now accommodate a larger population and the associated sewage flow.

**Ronkonkoma Hub
Sanitary Pump Station and
Force Main Piping
Ronkonkoma, NY**

