

FDNY Training Academy Wharf Restoration

The project involved the rehabilitating and partially reconstructing of the existing concrete-encased steel wharf located at the FDNY Training Academy on Randall's Island. Years of weathering, ship collisions, a structural fire, and storm events (Super Storm Sandy) had deteriorated the wharf to an unusable condition. The Wharf's location on the East River and relationship to the Training Academy central mission necessitated its rehabilitation.



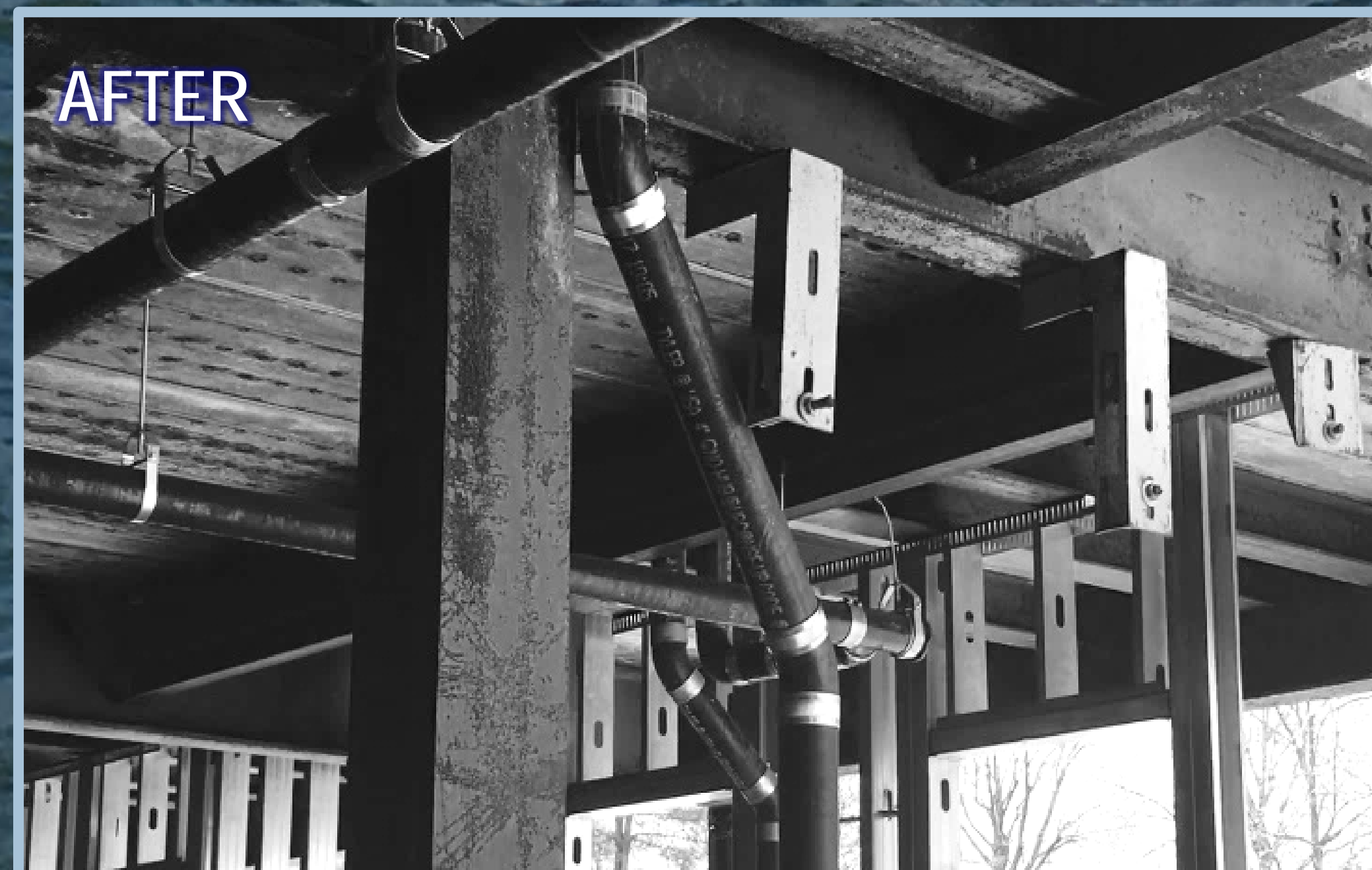
The modernized platform now allows all FDNY marine vessels to safely dock, train and dispatch for emergency operations.

The wharf is primarily used as a Fire Rescue Boat docking and launching location in the event of water rescue or emergency events and is secondarily used as a Marine Rescue training area, materials and equipment deployment, and HazMat and land-to-ship firefighting training.

BEFORE



AFTER



The approximate area of rehabilitation was 23,000 square feet.

FDNY Training Academy
Wharf Restoration
New York City
Fire Department



CAMERON
ENGINEERING
Woodbury, NY